

## Mission

*To promote an effective exchange of information between Family Child Care and other Childhood Care and Education System partners in order to enhance the quality of care for the children in Oregon.*



## Table of Contents

- Words from Chairperson, Jeannie Suihkonen
- Oregon Student Assistant Commission
- Provider Complaint Website
- Tax Credit Information for Child Care Providers
- Oregon Registry form in Spanish
- Live, Love, Learn Early Childhood Series
- Child and Adult Care Food Program
- Oregon Commission for Child Care Input on Exempt School age Care
- Oregon Statewide Mentoring Program
- Inclusive Care Survey
- Headstart for Homeless Marion, Polk Counties
- OAEYC Calendar
- Practical Strategies training
- NAFCC conference
- Employment Related Day Care Program (ERDC)

Dear Family Child Care Providers across Oregon,

This legislation year has really shown us what can be done when we work together! Thank you to both of the unions, Mark Anderson, Tom Olsen, Oregon Commission for Child Care and all of the people who have worked so hard to make changes occur with the DHS reimbursement rates. This really is a victory for working families, child care workers and most of all for many children throughout Oregon. Hats off to all of you!!!

Please remember to research and vote for US President thoughtfully as well. More changes can be in the balance. Your thoughts and actions do make a difference. It does matter who you vote for!

Thank you to PRO for bringing the great Lisa Murphy to Oregon again and now Bev Bos as well! Thank you to OAEYC for working so hard to present so many set 2 classes for us to take! I think child care in

Oregon is on a roll and we need to keep the momentum going.

OFCCN is going to have another family child care leadership conference this summer and so be looking for the dates coming up soon! We will be printing 3 newsletters now because the information needs to be at your door step in a timely manner. We are also going to present a questionnaire to you that will coming soon so please, please fill it out and send it back A.S.A.P.. Your opinion really does matter!

Remember that together we can make all aspects of child care in Oregon shine and that can create such a positive change in tomorrow for everyone.

Thank you for all your hard work!

Warmly,

*Jeannie Suihkonen*  
OFCCN -Chairperson  
(503) 378-1596



## OFCCN Leadership and Contacts

**Chairperson:**  
Jeannie Suihkonen (503) 378-1596  
*jeannies8@hotmail.com*

**Secretary/ Newsletter:**  
Renee Andersen  
*ofccn1@gmail.com*

**Treasurer:**  
Lyn Mellon

**Vice Chairperson:**  
Position Open

**Board Members:**  
Becky Groves  
Sabrina Anderson  
Lisa Smith Uhl, M.A.

**Oregon Family Child Care Network:**  
E-mail us at:  
*ofccn1@gmail.com*

Or visit our website at:  
[www.oregonfamilychildcarenetwork.org](http://www.oregonfamilychildcarenetwork.org)

## A great big **thank you** goes out to:

Peggy Cooksey ..... OSAC  
Tom Olsen ..... CCD  
Renee Andersen ..... OFCCN  
Patsy Kohout ..... CCD  
Lisa Uhl..... *Live, Love & Learn*  
Lynne Reinoso..... CACFP  
Heidi McGowan..... OCCC  
Kim Ashley ..... CCR&R  
Clackamas ESD ..... CCR&R  
Sue Kline, Kathy Seubert.....  
Peggy Cain ..... *DHS CCP*

**... without you this newsletter would not have been possible!**

*If anybody would like to have an article printed in the next newsletter, either watch for the email request from us or send them directly to [ofccn1@gmail.com](mailto:ofccn1@gmail.com), and we'll see what we can do for you!*

Article by:  
**Peggy D. Cooksey**  
Portfolio Coordinator

# Oregon Student Assistance Commission



Scholarship and Access Program

During the 2007-09 State of Oregon legislative budget process, approximately \$900,000 designated for the Student Child Care Grant previously administered by the Oregon Department of Human Services (DHS) was transferred to the Oregon Student Assistance Commission (OSAC). Administration of the grant was to begin on October 1, 2008. However, OSAC and DHS developed a memorandum of understanding to facilitate the continued administration of the grant by DHS through December 31, 2007.

The Oregon Student Assistance Commission is the student financial aid agency for the State of Oregon. The agency acts as a clearing house for the Free Application for Federal Student Aid (FAFSA) for the state, administers the Oregon Opportunity Grant, and also administers a large portfolio of privately funded scholarships and other public programs in conjunction with various state agencies.

OSAC has developed the new Oregon Student Child Care Grant Program to act as another student financial aid tool rather than as social entitlement type program. Payments for child care will be disbursed directly to the recipients' schools, not to child care providers. Disbursements will be made on a term/semester basis, depending upon the academic period at each recipient's post-secondary institution. Schools will be instructed to consider the disbursement and the costs of child care as part of the student's overall student budget. OSAC will "grandfather" into the program those people who were receiving the grant while it was at DHS, and will start awarding those who were on the waiting list kept by DHS starting later this year. More information about the program may be found at.

OSAC has developed an on-line application, has contacted those people who were recipients of the grant while it was at DHS, and is preparing to make the first pay-outs to the schools of those recipients who have complied by sending in the completed application. For more information, contact Peggy Cooksey, Oregon Student Assistance Commission, at [peggy.d.cooksey@state.or.us](mailto:peggy.d.cooksey@state.or.us) or by telephone at 1-800-452-8807 ext. 7443.

## Provider Online Complaint Website

Article by:  
**Tom Olsen**  
Child Care Division

The Child Care Division is notifying parents, providers, and partners that effective February 11, 2008, complaint information about child care providers will be available on our website, [www.childcareinoregon.org](http://www.childcareinoregon.org).

The online information will include complaints that have been investigated and found to be valid since January 2004 (the date our new web-based licensing information system became operational). The information will not include complaints that were investigated and found not to be valid, or that were unable to be substantiated.

So why are we doing this now? In November 2007, news articles appeared about the difficulties parents experience in getting information about the licensing history of child care providers. Then, a group of concerned parents appeared at the December meeting of the Commission for Child Care and requested that the Division make complaint history available online. We agreed. Our new licensing system has the necessary technology, the information is public and subject to disclosure, and it makes sense for parents to be able to get the information they need in the format that is most convenient to them.

This does not mean we will stop providing information by phone. The website will clearly state that complaint information is only one piece of compliance history, and urge parents to call us for an in-depth discussion.

Informed parents are the best advocates for quality child care. Having access to complaint information in multiple formats will help working families make the best decision for their children.



# Tax Credit Information for Child Care Providers

Article found online by:  
Renee Andersen  
OFCCN newsletter  
editor

## Oregon Working Family Child Care Credit (WFC)

### What You Need to Provide to Families

The WFC is a refundable Oregon tax credit for low-income, working families. Eligibility is based on the family's child care expenses, household size, and federal adjusted gross income. This credit is available in addition to the federal Child & Dependent Care Credit. For more information about filing for the credit, visit the Department of Revenue's website or check the Oregon income tax booklet.

What do you need to provide to your families claiming the credit? You should provide a receipt each time a family pays for your services. You also need to track the amount the family pays to you throughout the year and issue an end-of-year statement for each child.

Families filing for the credit will need either your social security number (SSN), individual tax identification number (ITIN), or federal employer identification number (FEIN), as well as your address and telephone number for their returns. More information for child care providers is available on the Department of Revenue's website.

*This above information is provided by the CC&R Network in cooperation with the Department of Revenue.*

## Other State and Federal Tax Credits for Families with Children

**In addition to the Working Family Child Care Credit, you and your families may be eligible to claim other tax credits for families with children:**

- Federal Earned Income Tax Credit worth up to \$4,716;
- Federal Child Tax Credit worth up to \$1,000 per child;
- Federal Child & Dependent Care Tax Credit worth up to \$2,100;
- Oregon Child & Dependent Care Tax Credit worth up to \$1,800; and
- Oregon Earned Income Tax Credit worth up to \$236.

Eligibility for these credits depend on the taxpayer's household income and number of qualifying dependents. The Earned Income Tax Credits are refundable, so even if a family owes no taxes, they may still be able to claim the credits. Families must file a return to claim any of these credits.

### About the CCR&R Network's Tax Credit Campaign

Each year, the Oregon Child Care Resource & Referral Network joins the National Women's Law Center and child care partners in several other states to provide free information to families and child care providers about valuable state and federal tax credits. For more information about tax credits and free tax preparation sites, visit [OregonChildCare.org](http://OregonChildCare.org) or call 800-342-6712



## Oregon Registry forms avail. in Spanish *Formas del Registro de Organ ahora en Español*

Article by:  
Patsy Kohout  
CCD

The Oregon Registry: Pathways for Professional Recognition in Childhood Care and Education is a voluntary, statewide program to document and recognize the professional achievements of people who work in the childhood care and education profession.

### To apply to be on the Oregon Registry:

Visit the website for the Oregon Center for Career Development in Childhood Care and Education: [www.centerline.pdx.edu](http://www.centerline.pdx.edu) to download the Oregon Registry Application information and materials.  
OR

Call the Oregon Center for Career Development in Childhood Care and Education toll free at 1-877-725-8535. Ask for the Oregon Registry Application information and materials to be mailed to you.

El Registro de Oregon (Oregon Registry): Senderos para el Reconocimiento Profesional en el Cuidado y Educación Infantil (Pathways for Professional Recognition in Childhood Care and Education) es un programa voluntario a nivel estatal que tiene el objetivo de documentar y reconocer los logros profesionales de las personas que trabajan en el campo profesional del cuidado y educación infantil.

### Para ser parte del Registro de Oregon:

Visite la Web del Centro de Oregon para el Desarrollo Vocacional en Cuidado y Educación de Niños: [www.centerline.pdx.edu](http://www.centerline.pdx.edu) y descargue los materiales de solicitud para el Registro de Oregon.

Llame gratis al Centro de Oregon para el Desarrollo Vocacional en Cuidado y Educación de Niños: 1-877-725-8535 y pida que se le envíen por correo los materiales de solicitud para el Registro de Oregon.



Article by:  
Lisa Uhl  
Certified Conscious  
Discipline® Instructor

# Live, Love, and Learn

## Early Childhood Consulting

*You are invited to  
an Early Childhood series*

### **Early Childhood A B C's** **a 3 part class series**

**DATES:** March 15, 29 and April 12  
**TIME:** 12:30 to 4:40  
**COST:** \$75 for all three classes or  
\$30 for single sessions  
**PLACE:** New Apostolic Church  
11215 SW 64th Ave.  
Portland, 97219

#### **About the Trainer**

*Workshops are offered by Lisa Uhl, a Certified Conscious Discipline® Instructor. Lisa Uhl is a graduate from Montana State University Billings with specialization in both Elementary Education and Early Childhood Education. She has a Master's Degree from Concordia University in Portland Oregon and is an Oregon Master Trainer. She has over 29 years experience with young children and families and 24 years as a parent. She has served on State boards, Accreditation teams and has been a State trainer. Lisa is a Certified Conscious Discipline® Instructor through Dr. Becky Bailey's Loving Guidance TM, as well as a graduate of the Jensen Learning for Brain Compatible training. She promotes brain smart® positive environments and is dedicated to sharing this innovative philosophy with educators and parents who envision a better way!*

#### **Other class options:**

*If you would like to receive training in your center or home, and have more than 5 people, I will design a class to fit your needs.*  
Some Ideas: • Loving Science (3-5 hours) • Building Bonds (3-5 hours) • Diversity in Early Care (2-4 hours)  
• Open Ended Creativity (2-5 hours) • Conscious Discipline (4-8 hours, more than one session)  
Or create your own topic!

### **Class Descriptions**

#### **CLASS A - MARCH 15TH**

All about Inclusion - This class will cover the basic of inclusion of children with special needs in Early Childhood Programs.

#### **CLASS B - MARCH 29TH**

Babies and Toddlers - This class gives the latest brain research and how it relates to how babies and toddlers learn and behave. This class uses the Brain Smart™ techniques.

#### **CLASS C - APRIL 12TH**

Creating a Community - Come to this class to see how building relationships is critical in Early Childhood. Learn 6 basic bonding techniques and go home with ideas to use today.



www.liveandlearn.net  
www.lovingguidance.com



# USDA CACFP

## Child and Adult Care Food Program

Article by:  
Lynne Reinoso  
Manager,  
Community Nutrition

Do you have children in care and serve nutritious meals and snacks? You might be eligible to apply for the Child and Adult Care Food Program (CACFP) and get paid for what you are already doing!

Contact ODE Child Nutrition Programs at (503) 947-5902 for more information, or log on the website at [www.ode.state.or.us/services/nutrition/cacfp](http://www.ode.state.or.us/services/nutrition/cacfp) for more information on becoming a part of the CACFP.

### **What is the CACFP?**

- \* CACFP is the Child and Adult Care Food Program, a Federal program that provides healthy meals and snacks to children and adults while they are in day care.
- \* In addition, CACFP helps make afterschool programs more appealing to at-risk youth by offering nutritious snacks and suppers for programs in low-income areas.
- \* Homeless children can also receive up to three meals each day through shelters that operate the program.

### **Who is eligible for CACFP meals?**

- \* Children age 12 and under
- \* Migrant children age 15 and younger
- \* Functionally impaired adult participants or adults age 60 and older enrolled in an adult day care center, and
- \* Youths through age 18 in homeless shelters and in afterschool programs in needy areas

### **What kinds of meals are served?**

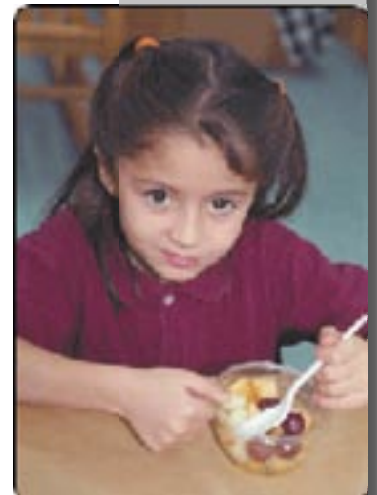
- CACFP facilities follow the meal patterns established by USDA:
- \* Breakfast-a serving of milk, fruit or vegetable, and grains or bread
  - \* Lunch and Supper-require milk, grains or bread, meat or meat alternate, and two different servings of fruits or vegetables
  - \* Snacks-include two different servings of the four components: milk, fruits or vegetables, grains or bread, or meat or meat alternate

### **What types of facilities participate?**

- \* Family Day Care Homes-children receiving nonresidential day care in CCD Certified or Registered homes and DHS listed homes
- \* Child Care Centers-licensed or approved public or private nonprofit child care centers, Head Start programs, and some for-profit centers
- \* Afterschool Programs-centers in low-income areas provide snacks and suppers to school age children
- \* Homeless Shelters-emergency shelters provide residential and food services to homeless children
- \* Adult Day Care Centers-public, private nonprofit, and some for-profit adult day care facilities provide structured comprehensive services to functionally impaired nonresident adults

### **Contacts**

If you are interested in participating in CACFP, or have questions about the program, contact the Oregon Dept. of Education, Child Nutrition Programs at (503) 947-5902 or visit [www.state.or.us/services/nutrition/cacfp](http://www.state.or.us/services/nutrition/cacfp).



Article by:  
**Heidi McGowan**  
Executive Officer,  
Oregon Commission  
for Child Care

# Oregon Commission for Child Care Seeks Input on Exempt School Age Care

One of the focus areas for the Commission for Child Care in the next year is the landscape of school age care. The working definition of exempt school age care has many 'gray' areas because of the variety of programs and facilities available to schoolagers. For example, some after school programs may offer an activity such as karate, yet also provide a place for children to stay for several hours before and/or after the class. Additionally, school-based programs run by an outside entity technically fall under regulation, but many of these programs consider themselves as 'exempt' because of the location.

The Commission is conducting a series of public forums which asks for input on the following questions:

- what is working well in your community regarding school age care?
- what is not working well in your community for school aged children and youth?
- does the current definition of exempt school age care need to be modified to ensure the health and safety of school aged children and youth?

Information gathered will inform the Commission on whether changes to administrative rules are necessary. Recommendations will be made to the Oregon Child Care Division if input from the public indicates that changes should be made.

Two public forums have already been conducted in Salem and the Portland metropolitan area; two more will be offered in Eugene and Medford. Additionally, an online survey will be conducted in April 2008 to gather more information from school age providers that are unable to attend the public forums.

Information on the public forums and the online survey is available on the Commission for Child Care website: [www.oregoncommissionforchildcare.org](http://www.oregoncommissionforchildcare.org) or the Oregon Child Care Division home page at [www.childcareinoregon.org](http://www.childcareinoregon.org)



## Oregon Statewide Mentoring Program

The statewide Mentoring Program is a program of the Oregon Child Care Resource and Referral Network. The Mentoring Program helps providers realize their professional goals through a one-on-one relationship between mentee and mentor. Mentors are employees or independent contractors with state sponsored Child Care Resource and Referral (CCR&R) programs, and meet state approved standards. Mentors are committed to child care providers in their communities.

If you are currently working in the field of child care and education or are actively seeking to enter the field you are eligible to work with a mentor. You will be connected with a mentor who will set up an appointment to meet with you in person. At this meeting, goals will be established based on your individual needs.

Areas of mentoring include, but are not limited to:

- Oregon Registry Steps and the enrollment process
- CDA process
- Accreditation process
- Selection of courses and/or trainings to meet professional goals
- College options
- Program assessments
- Setting up and maintaining quality environments
- Improving infant, toddler, preschool, school age or multi age programs
- Caring for children with special needs
- Inclusive child care programs

If you have questions or want more information about the program, please contact your local CCR&R program <http://www.oregonchildcare.org/forproviders/findccrr.htm> or Kim Ashley, Mentoring Program Coordinator, Oregon Child Care Resource and Referral Network, 800.342.6712 or 503.779.2545.

We acknowledge the positive impact you have on children and their families and look forward to your participation in the statewide Mentoring Program.

Article by:  
**Kim Ashley**  
Mentoring Program  
Coordinator,  
CCR&R program



# Inclusive Child Care Inventory Project Parent and Provider Surveys

Article by:  
**Clackamas ESD**  
CCR&R

The Inclusive Child Care Program is currently conducting a statewide inventory of resources which support child care for children and youth with special needs. As part of this project we are asking parents and child care providers to complete a survey about this topic.

We are requesting that parents of children with special needs and child care providers (whether or not they provide care for children with special needs) complete a survey.

The surveys are available:

- online on Survey Monkey
  - [Parent survey](http://www.surveymonkey.com/s.asp?u=485823733728) at [www.surveymonkey.com/s.asp?u=485823733728](http://www.surveymonkey.com/s.asp?u=485823733728)
  - [Provider survey](http://www.surveymonkey.com/s.asp?u=46913733730) at [www.surveymonkey.com/s.asp?u=46913733730](http://www.surveymonkey.com/s.asp?u=46913733730)
- via email by request to [inclusivecc@oregonchildcare.org](mailto:inclusivecc@oregonchildcare.org)
- on paper from the Inclusive Child Care Program (call 1-800-342-6712 and ask for Lori or Lorine).



## Headstart for Homeless Children in Marion and Polk County

The Head Start for Homeless Children Collaborative is doing a project with Head Start families enrolled at the Outreach site. The name of this project is The Head Start for Homeless Children Collaborative Project. We are doing this project for two reasons; to better understand the needs of families facing issues with homelessness, and to be able to provide them with greater assistance than the Head Start program is normally able to provide.

The Outreach center was developed to serve children and families who have particular concerns including homelessness, disabilities, health concerns, and exposure to domestic violence. Our program has developed a project to identify ways to provide extra services to the children and families at the Outreach site, and have received grant funding to assist with those costs.

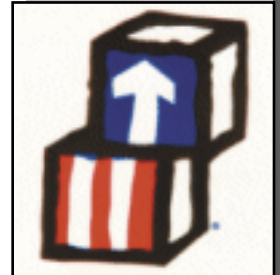
One particular barrier that families experiencing homelessness may face, as adults engage in job search, educational, and skill-building activities, is a lack of child care (as it relates to access, affordability, and quality). Therefore, some of our grant dollars are specifically for the purpose of providing short duration child care utilizing CCD regulated child care providers. If a family utilizes this option the child care provider would be compensated for the care provided. We would appreciate the participation of several child care providers who would be willing to provide short notice, short duration child care services to Community Action Head Start Outreach Project families. We envision the development of a list of several providers that we can call when these services are needed.

Please contact CCIS at 503-585-2491 in order to express your interest in being a part of this needed project. Once the list is developed we will inform you of next steps to your ongoing involvement.

Thanks

Heather Simmons, Community Action Head Start and Jon Reeves, CCIS

Article by:  
**Jon Reeves**  
CCIS



## OFCCN Plea for Email Addresses!

The Oregon Family Child Care Network (OFCCN) needs your help!!! We are starting up a new email system and are requesting YOU to send us your email address and receive your newsletter (and any other updates) electronically! If you are interested in helping us... just give Renee Andersen ("The Link" newsletter editor) an email at [ofccn1@gmail.com](mailto:ofccn1@gmail.com) and we will add you to the mailing list!

# OAEYC 2008 Professional Development Calendar

Training in **BOLD** Sponsored by OregonAEYC



WHEN	WHAT	WHERE	WHO TO CALL
March 1, 2008 Saturday	Jackson Chapter Winter Conference Keynote: Serena St. Claire, Ph.D.	Walker Elementary Ashland, OR	Tracey 541-789-4127 tbrown@asante.org
March 7 & 8, 2008 Friday & Saturday	Central Oregon Chapter Winter Conference Keynote: Kathy Biles, Ph.D.	Eagle Crest Redmond, OR	Robyn 541-419-1502 rlopezmelton@msn.com
March 8, 2007 Saturday	Provider Resource Organization Conference Speaker: Bev Bos	Rolling Hills Church Tualatin, OR	Joanna 503-598-3935 www.providerresource.org
March 9, 2008 Sunday	PCPO Conference: Keynote and Teacher Brunch with Bev Bos	Oaks Park Portland, OR	503-293-6161 www.oregonpreschools.org
March 12-14, 2008 Wed. – Fri.	Oregon Association of Child Care Directors Spring Conference	Agate Beach Inn Newport, OR	Val 541-933-2446 www.oaccd.com
April 11 & 12, 2008 Friday & Saturday	OregonAEYC Professional Development Institute, Keynote: Cecelia Alvarado	Lane Community College Eugene, OR	OAEYC 503-233-0190 1-800-452-3610
April 12-19, 2008 Saturday – Saturday	Week of the Young Child	Nationwide	NAEYC www.naeyc.org 1-800-424-2460
April 26, 2008 Saturday	Eastern Oregon Spring Conference	Blue Mountain CC Pendleton, OR	Kathy 541-278-5957 kbeck@bluecc.edu
June 8-11, 2008 Sunday – Wednesday	NAEYC Professional Development Institute	New Orleans, LA	NAEYC www.naeyc.org 1-800-424-2460
June 25 -29, 2008 Wednesday -Sunday	Western States Leadership Network “Bridging the Gap”	OSU Corvallis, OR	OAEYC 503-233-0190 1-800-452-3610
October 10 & 11, 2008 Friday & Saturday	OregonAEYC Fall Conference	Oregon Convention Ctr Portland, OR	OAEYC 503-233-0190 1-800-452-3610
November 5-8, 2008 Wednesday – Saturday	NAEYC Annual Conference	Dallas, TX	NAEYC www.naeyc.org 1-800-424-2460

Are you looking for more training? Check out the information at [www.oregonchildcaretraining.org](http://www.oregonchildcaretraining.org)

Did you know that there is MONEY\$\$\$\$\$ available to support YOUR professional development? The John & Betty Gray Early Childhood Initiative of the Oregon Community Foundation *might* be able to help YOU! The program is on pause at the moment, but check back in mid-February for new developments.

• Registered Family Child Care Provider
• Staff at a Certified Family Child Care Home
• Staff at a Certified Center
• Staff of an After-school Program serving Elementary/Middle School Children
• Staff at a Head Start

For information on scholarships and *possible reimbursements*, call:  
The Oregon Center for Career Development in Childhood Care and Education; Teresa Lee: 503-725-8535 or toll free 1-877-725-8535  
Email: [occdscholarship@pdx.edu](mailto:occdscholarship@pdx.edu)  
Or on the web at: [www.centerline.pdx.edu](http://www.centerline.pdx.edu) Click on the Oregon Statewide Scholarship link under Programs & Services

## OregonAEYC Governing Council Calendar

Saturday & Sunday, May 3-4, 2008	Spring Retreat	Corvallis, OR – Linn-Benton Chapter
Saturday, August 9, 2008	Summer Meeting	Eugene, OR – Lane County Chapter
Saturday, October 11, 2008	Meeting at OAEYC Fall Conference	Portland, OR

**Who to Contact:** If you would like a copy of the agenda or would like to attend part or all of any meeting, please call OAEYC for more information: (503) 233-0190 or 1-800-452-3610 or [oregonaeyc@covad.net](mailto:oregonaeyc@covad.net)



## Oregon Association for the Education of Young Children

[www.oregonaeyc.org](http://www.oregonaeyc.org)

The Link



# "Practical Strategies for Diverse Populations"

Information by:  
Sue Kline  
Kathy Seubert

**Thursday, April 24th and  
Friday, April 25th, 2008**

*Sponsored by the Jackson and Josephine County Early Intervention Councils*

**Smullin Health Education Center Auditorium  
Rogue Valley Medical Center campus  
2825 East Barnett Rd., Medford, Oregon**

*Target Audience: Service providers who work with young children (birth-to-six years of age) and their families.  
Parents and care providers welcome.*

## Day long sessions:

### **April 24th**

- Assistive Technology
- Crucial Conversations
- Autism: Coaching parents
- Building Listening Skills
- Cultural Competence/Bilingual Classrooms

### **April 25th**

- Individual differences
- Positive Behavior Supports
- Apraxia/ Bilingual Strategies
- Autism

### **April 24th 6-7:30 PM**

- Parent Information/Support meeting- No Fee to Attend

**Direct inquiries via e-mail to: [smendoza@asante.org](mailto:smendoza@asante.org) If e-mail is not available, please call Susan Mendoza at (541) 789-5257 on weekdays, between 9 a.m. and 5 p.m**



## Registration

### Postmarked on or Before March 29, 2008

- \$65 - Professional
- \$25 - Parent(s) of a child with special needs or full-time students with ID

### Late Registration (After March 29, 2008)

- \$85 - Professional
- \$45 - Parent(s) of a child with special needs or full-time students with ID

The registration deadline is March 29, 2008. The training is expected to fill quickly, so please register early. Check-in time begins at 7:30 a.m. A sign-in signature is required if you wish to receive CEU's. Requests for cancellation cannot be honored. No confirmation notice will be sent. If we do reach capacity, we will notify you. Lunch is included on Thursday, with some vegetarian options available Friday lunch on your own. Please make your check, money order, or purchase order payable to the Jackson County Early Intervention Council. If paying by purchase order, please present your payment at the door.

### **PLEASE MAIL THIS COMPLETED FORM AND OUR REGISTRATION FEE TO:**

JCEIC  
c/o Asante Child Development Services  
691 Murphy Road #112  
Medford, OR 97504

## Participant Information

*please print*

Last name \_\_\_\_\_

First name \_\_\_\_\_ MI \_\_\_\_\_

E-mail address \_\_\_\_\_

Agency/company \_\_\_\_\_

Address \_\_\_\_\_

City \_\_\_\_\_

State \_\_\_\_\_ Zip \_\_\_\_\_

Daytime phone \_\_\_\_\_ ext \_\_\_\_\_

Alternate phone \_\_\_\_\_

S A V E T H E D A T E

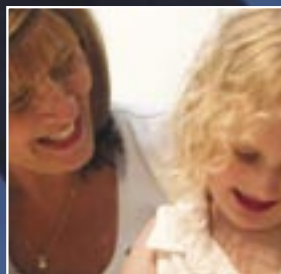
NAFCC

National Association for Family Child Care

18th National Conference

F a m i l y C h i l d C a r e

Challenge **11** for  
Excellence



July 17 to July 19, 2008  
Renaissance Schaumburg Hotel & Convention Center  
Chicago, IL

Host Association – Illinois Association for Family Child Care



# EMPLOYMENT RELATED Day Care Program

Help for working parents. *Things have changed!*

**There have been changes to the Employment Related Day Care (ERDC) program. Because of the changes, you may now qualify for the program.**

**For example:**

- » » **A family of 2 can have income up to \$2,159 and still be able to get help.**
- » » **A family of 3 can have income up to \$2,714 and still be able to get help.**

- **Copay amounts have gone down and the amounts paid to child care providers have gone up.**
  - » **This means the part you pay for child care could be less than in the past.**

**To find out if you can get help paying for child care while you work, contact your local DHS office.**

**WWW.OREGON.GOV/DHS**



Independent. Healthy. Safe.

**DHS**  
Oregon Department  
of Human Services

**OFCCN** is a communication link between family child care providers and agencies throughout the state of Oregon.

**OFCCN** gathers the provider's voice through the use of surveys, personal conversations, and provider participation at community meetings, conferences, and retreats.

**OFCCN** works with local communities, organizations, agencies,

---

*"gathering voices...  
working with  
communities...  
spreading the voice  
of family child care  
providers"*

---

legislators, and other childhood care and education partners.

Please help **OFCCN** spread the voice of family child care providers. Our voices together will advance our profession and the quality of family child care in Oregon.

**OFCCN** invites you to share your concerns, thoughts, and ideas with us, so that we can help your voice be heard!



NON-PROFIT  
U.S. Postage  
PAID  
Salem Oregon  
Permit No. 476